

# **THE RESILIENCE IMPERATIVE: Leadership and Governance Model of the Zuellig Family Foundation**

**Ernesto D. Garilao**

President, Zuellig Family Foundation

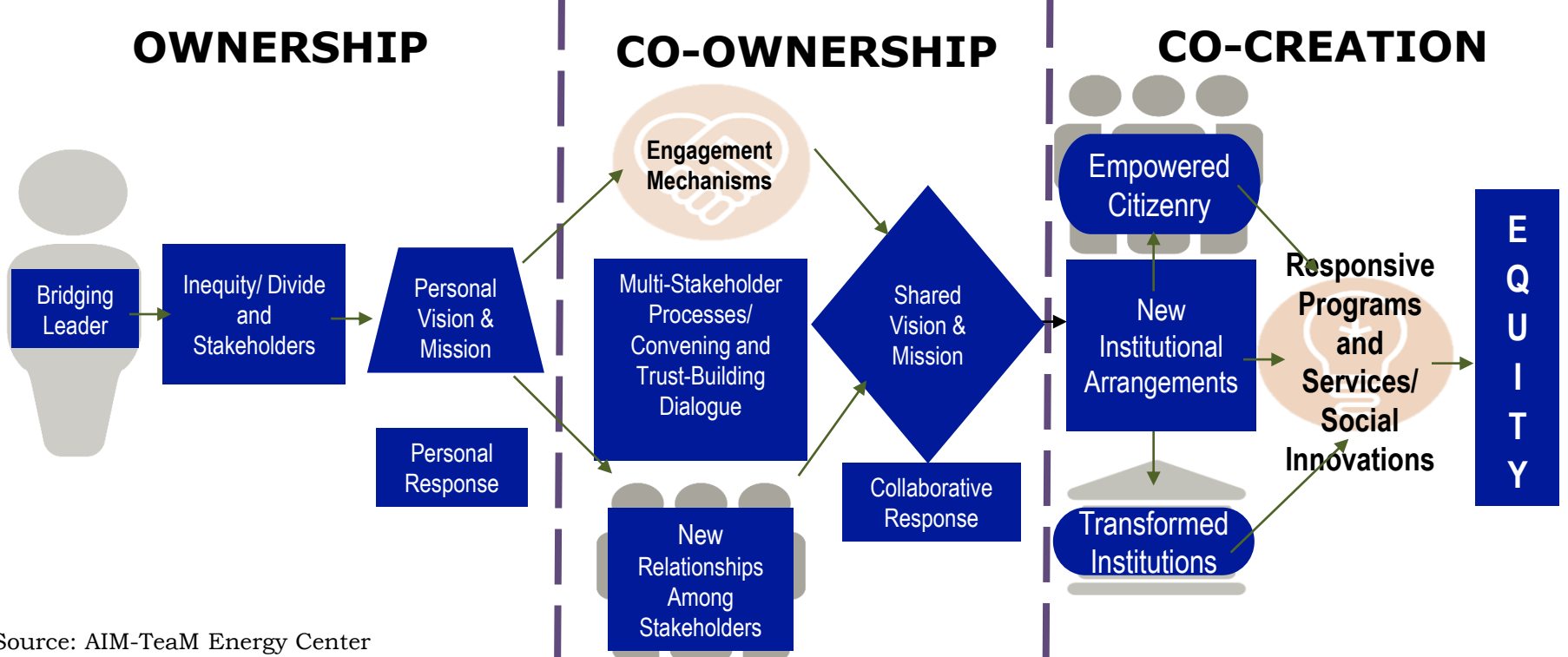
Vice-Chair for CSOs/NGOs, National Resilience Council

# ZFF HEALTH CHANGE MODEL

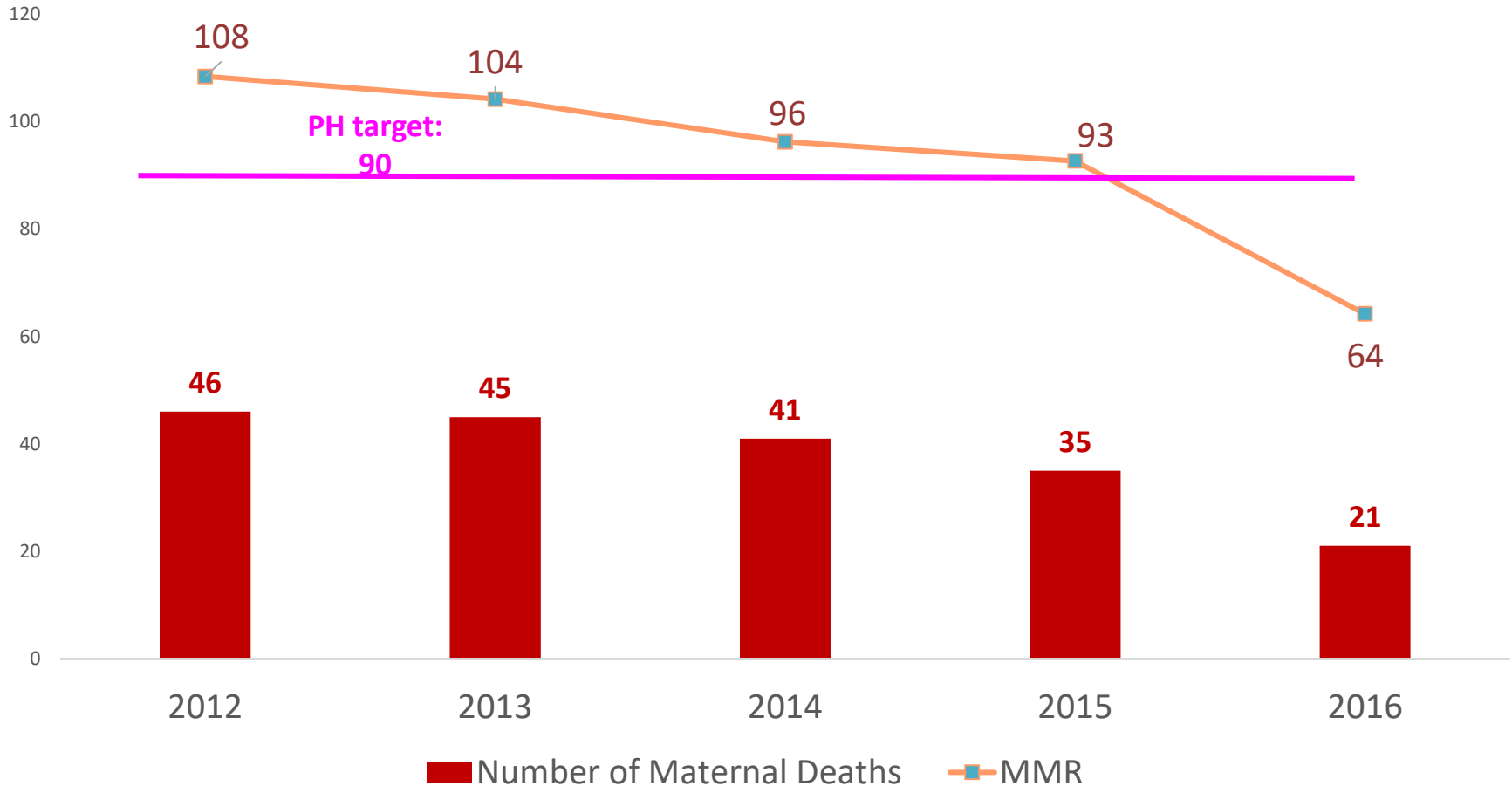
Training + Practicum + Coaching



## BRIDGING LEADERSHIP FRAMEWORK

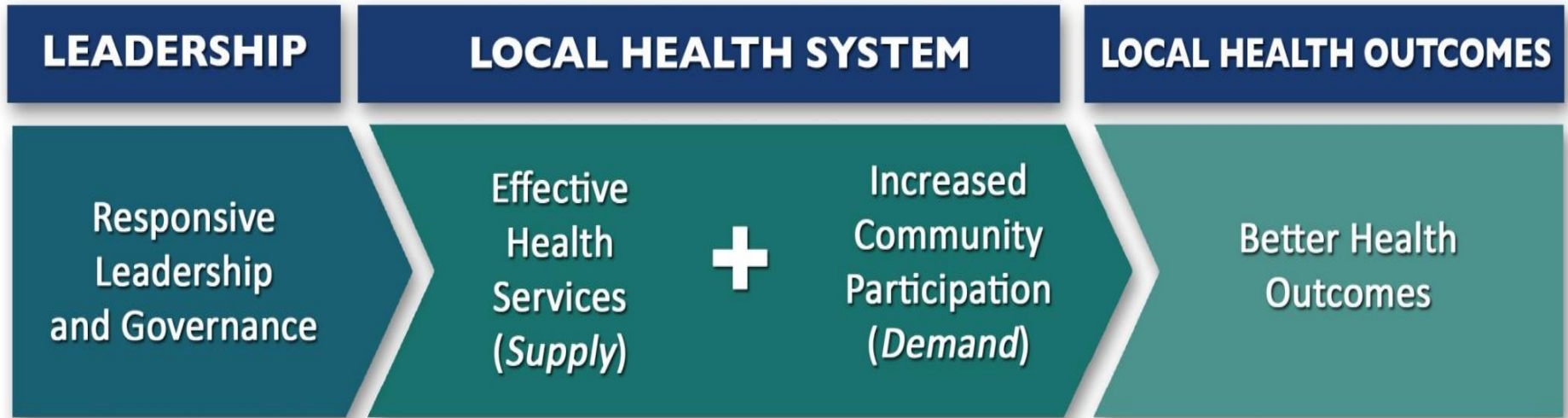


## Number of Maternal Deaths and MMR, 73 municipalities

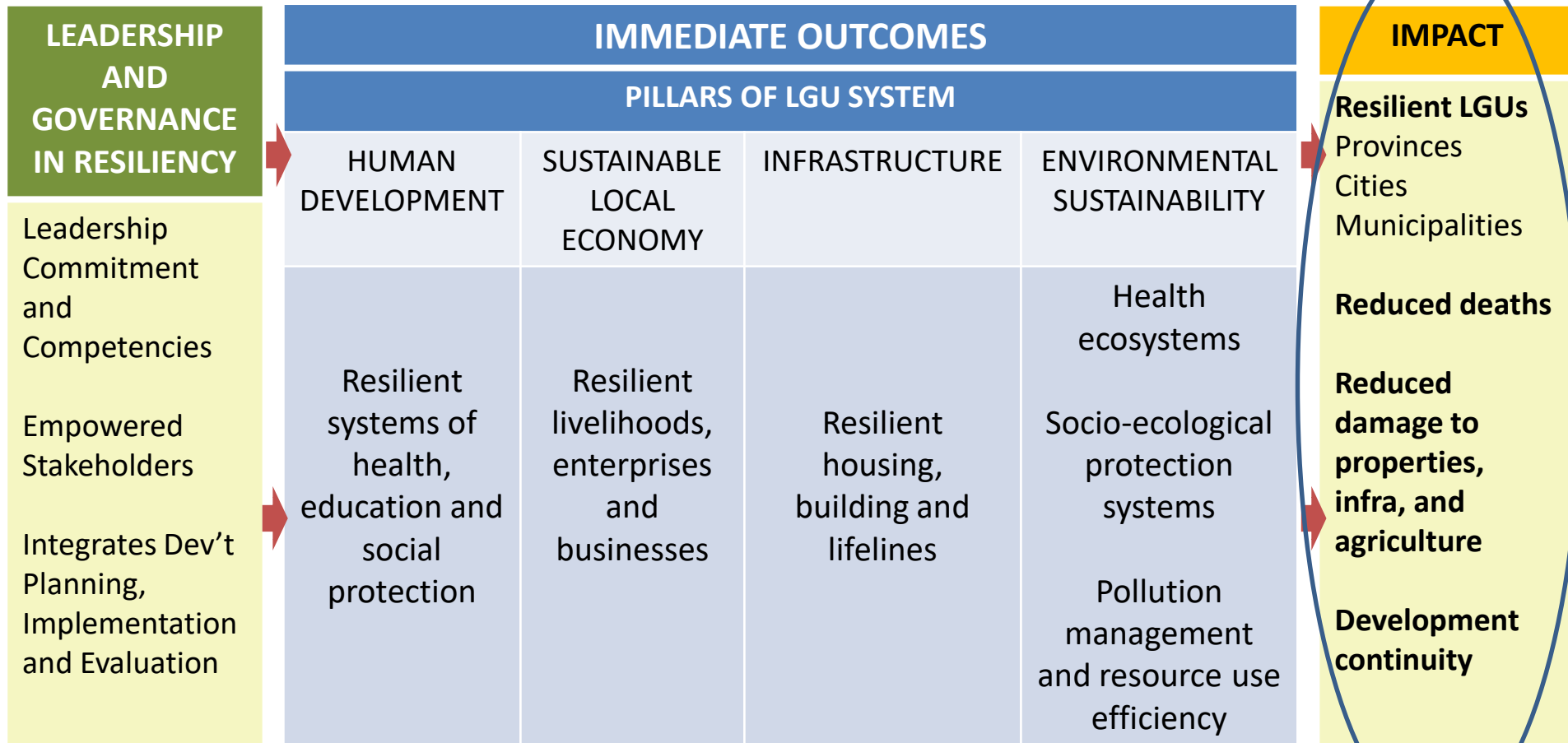


# ZFF HEALTH CHANGE MODEL

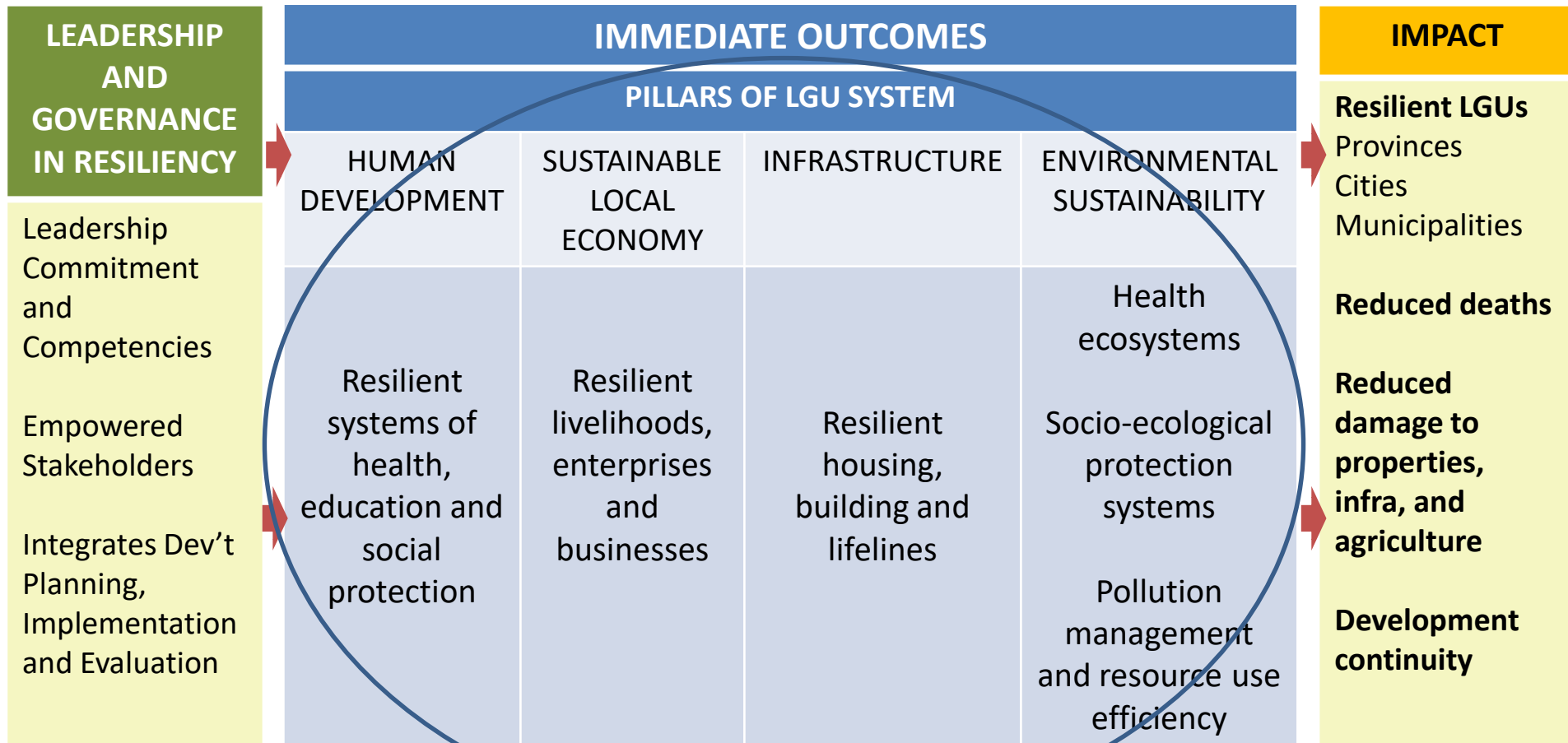
Training + Practicum + Coaching



# RESILIENCE MODEL



# RESILIENCE MODEL



# Three-Year Runway

## RESILIENCE

**1**

**PREPARE  
(Baseline)  
Ownership**

**How can we  
minimize loss of lives  
and assets?**

**2**

**ADAPT  
(Institutionalize)  
Co-ownership**

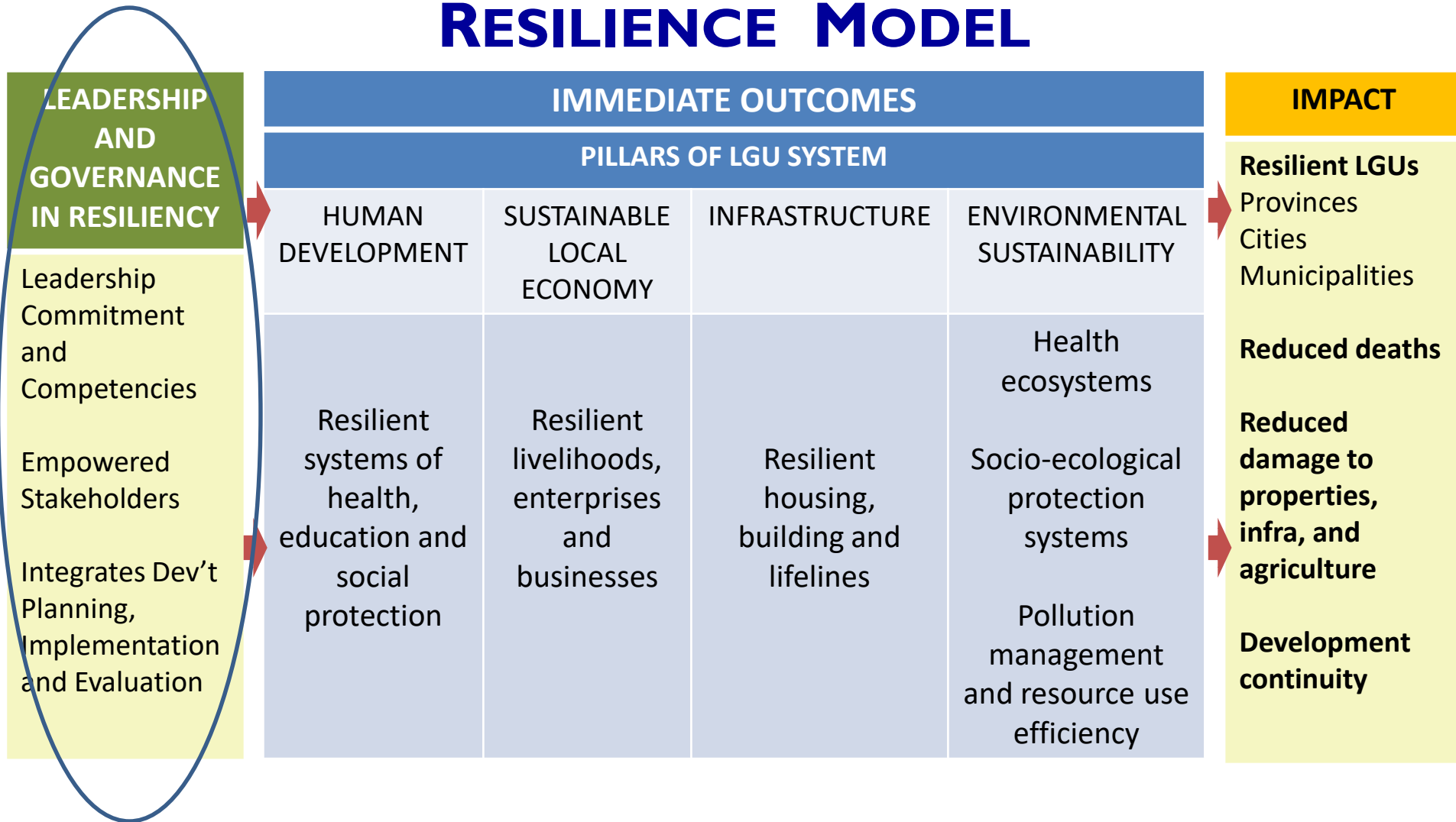
**How can we improve  
existing systems to  
reduce risks and  
vulnerability to  
hazardous events?**

**3**

**TRANSFORM  
(Implement)  
Co-creation**

**How can we change  
existing systems to  
achieve sustainable  
resilience?**

# RESILIENCE MODEL





# Two-Track Program

## LEADERSHIP & GOVERNANCE

- Resilience Leadership Program  
Module 1 to Module 6
- NRC Coalition Workshop M1 to M6
- Practicum with Coaching

## SCIENCE & TECHNOLOGY

- Climate and Disaster Risk Assessment
- Articulation of Research Questions &  
Priorities
- Solutions-Driven Action Research

# Leadership and Governance Development Program for LGU Resilience

Year	Resiliency Themes	<i>4 Pillars of Local Government Systems</i>			
		Human Development	Local Economy	Infra-structure	Environ-ment
2018	<b>Prepare</b>	1 year, 2 modules 6-month practicum (between modules) with coaching			
2019	<b>Adapt</b>	1 year, 2 modules 6-month practicum (between modules) with coaching			
2020	<b>Transform</b>	1 year, 2 modules 6-month practicum (between modules) with coaching			